

Universal Data Models

For Embarcadero® ER/Studio®



EMBARCADERO
TECHNOLOGIES



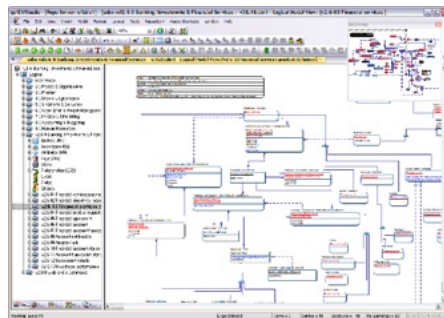
Universal Data Models, an industry-standard set of data model templates developed by renowned author and modeling expert Len Silverston, are now available for Embarcadero® ER/Studio®. These time-proven templates have been

continuously improved during the last 15 years and implemented by hundreds of companies, providing them with a complete set of data models that ensure quality, reduce development time, and facilitate standardization of existing data models and definitions.

- Achieve high-quality models
- Reduce development time
- Improve consistency and standardization

ACHIEVE HIGH-QUALITY MODELS

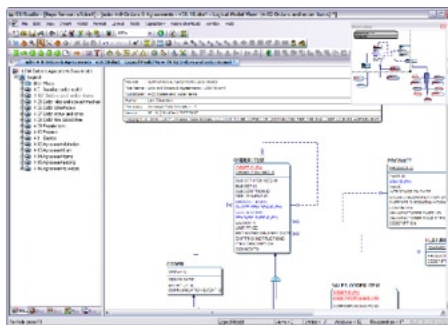
The Universal Data Models (UDMs) were developed by a team of experienced data modelers, led by Len Silverston. The templates have been refined based on hundreds of implementations and are laid out for easy navigation, including full attributes and detailed definitions for every attribute. They make sophisticated data models more accessible to small and medium-sized businesses that previously had to forego them due to budget or IT constraints. The models are available for nine different subject areas as a complete and integrated corporate model, and seven industry-specific add-ons.



Model your entire organization, including the specialized needs found in your unique industry.

REDUCE DEVELOPMENT TIME

The UDMs are available for ER/Studio, reducing development time and ensuring quality. The templates arm users with a powerful set of data models and data warehouse designs that jump-start database development projects. They include proven models for common business functions such as ordering and managing products, handling shipments, invoicing, accounting and budgeting, managing human resources, contact management, and project management. New models can be laid out and categorized into subject data areas with ER/Studio's easy-to-use format, reducing data model development and maintenance time by an average of 60 percent, as well as improve the quality of existing data models. Users can save even more time with the industry-specific extensions for Healthcare; Telecommunications; Manufacturing; Banking, Investments, & Financial Services; Insurance; Professional Services; and Travel.



Subject Area Models provide a focused model of common organizational activities.

IMPROVE CONSISTENCY AND STANDARDIZATION

The Universal Data Models enable users to be consistent with other organizations and improve quality assurance by referencing hundreds of integrated, "best practice" models. UDM customers can refer to a standard, proven source for models that are easily able to handle conflicting opinions regarding data modeling. All of the models contain a full set of entities, relationships, attributes, and detailed definitions. The models are also a great resource for enterprise data modeling, master data management, data warehouse, data governance, data quality, metadata, data dictionary standardization, and any effort where data models can help.

Related Products

ER/Studio®

A model-driven data architecture and database design solution.

ER/Studio® Viewer

View, navigate, and print ER/Studio models in a view-only environment.

MetaWizard

Integrate metadata across modeling tools, business intelligence, ETL platforms, and industry-standard exchange formats (XMI, XML, and XSD).

Embarcadero® Schema Examiner™

Automate error-checking and corrections for database schema to quickly and easily improve data quality and system performance.

Embarcadero® All-Access™

Instant access to the languages, tools, and technologies to design, build, and run your software applications and database systems.

| Features | Description |
|---|---|
| Subject Area Corporate Models | |
| The subject area data models provide a framework and re-usable constructs for common corporate subject areas and are a jumpstart for any company working on specific modeling efforts or striving to define a common data model. Each entity includes primary keys, foreign keys (when applicable), and full descriptions for both entities and attributes. | |
| People & Organizations | Includes entities such as PARTY, PARTY ROLE, ORGANIZATION, PERSON, and POSTAL ADDRESS |
| Product | Includes entities such as PRODUCT, SERVICE, GOOD, FEATURE TYPE, and INVENTORY ITEM |
| Orders & Agreements | Includes entities such as ORDER, AGREEMENT, REQUIREMENT, QUOTE, and RFP |
| Shipments & Deliveries | Includes entities such as SHIPMENT, RECEIPT, ISSUANCE, SHIPPING DOCUMENT, and SHIPMENT ROUTE SEGMENT |
| Work Effort & Project Management | Includes entities such as WORK REQUIREMENT, WORK EFFORT, TIME ENTRY, and RATE TYPE |
| Invoice & Time Billing | Includes entities such as INVOICE, BILLING ACCOUNT, PAYMENT, and FINANCIAL ACCOUNT |
| Accounting & Budgeting | Includes entities such as GENERAL LEDGER ACCOUNT, ACCOUNTING TRANSACTION, BUDGET, BUDGET SCENARIO, and PLANNING TRANSACTION |
| Human Resources | Includes entities such as EMPLOYEE, POSITION, RESPONSIBILITY TYPE, SKILL TYPE, SALARY, and BENEFIT |
| Web and e-Commerce | Includes entities such as USER PREFERENCE, WEB ADDRESS, OBJECT CONTENT FRAME, SERVER HIT, and WEB VISIT |

| | |
|---|---|
| Industry-Specific Models | |
| The industry area data models provide a framework and re-usable constructs for various industry areas and are a jumpstart for any company working on a modeling effort within a particular industry or striving to define a common data model. The models include all the subject area corporate models shown above that are integrated into the industry constructs. Each entity has primary keys, foreign keys (when applicable), and full descriptions for both entities and attributes. | |
| Repository for Banking, Investments, & Financial Services | Includes entities such as ACCOUNT, INVESTMENT VEHICLE, SECURITY, SAVINGS ACCOUNT, OBJECTIVE, RISK ANALYSIS, PERFORMANCE CHARACTERISTIC TYPE, YIELD TYPE, FINANCIAL POSITION, MORTGAGE, SCHEDULED PAYMENT DUE, FINANCIAL AGREEMENT, and ACCOUNT NOTIFICATION |
| Repository for Healthcare | Includes entities such as PATIENT, INSURED PARTY, INSURANCE PROVIDER, HOSPITAL, MEDICAL OFFICE, HEALTH CARE VISIT, HEALTH CARE EPISODE, CLAIM, and SETTLEMENT |
| Repository for Insurance | Includes entities such as INSURANCE AGENCY, PAYOR, INSURANCE PRODUCT, COVERAGE LEVEL, COVERAGE TYPE, ACTUARIAL ANALYSIS, RATE, APPLICATION, QUOTE, INSURANCE POLICY, PREMIUM SCHEDULE, and CLAIM |
| Repository for Manufacturing | Includes entities such as DISTRIBUTION CHANNEL, PART, RAW MATERIAL, PART SPECIFICATIONS, ENGINEERING CHANGES, MANUFACTURING BOM, MANUFACTURING ORDER, and PROCESS PLAN |
| Repository for Professional Services | Includes entities such as PROFESSIONAL RESOURCE REQUIREMENT, SKILL TYPE, RFI, RFQ, RFP, ENGAGEMENT, ENGAGEMENT RATE, PROFESSIONAL ASSIGNMENT, SERVICE ENTRY, and WORK EFFORT |
| Repository for Telecommunications | Includes entities such as TELECOMMUNICATIONS CARRIER, REGULATORY AGENCY, NETWORK COMPONENT, NETWORK ASSEMBLY, DEPLOYMENT, and SERVICE ORDER |
| Repository for Travel | Includes entities such as TRAVELER, TRAVEL PREFERENCES, TRAVEL RESERVATION, TICKET, SALE, SCHEDULED TRANSPORTATION, ACCOMMODATION CLASS, and TRAVEL EXPERIENCE |

| System Requirements |
|--|
| <ul style="list-style-type: none"> • ER/Studio 7.1 or higher • 2 MB per Subject Area Model • 10 MB per Industry Model or Integrated Corporate Model |

Download a Free Trial at www.embarcadero.com

Corporate Headquarters | Embarcadero Technologies | 100 California Street, 12th Floor | San Francisco, CA 94111 | www.embarcadero.com | sales@embarcadero.com